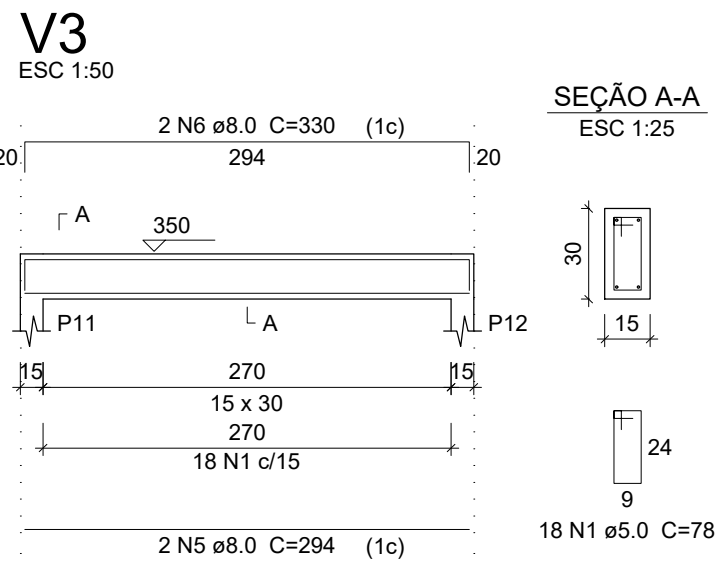
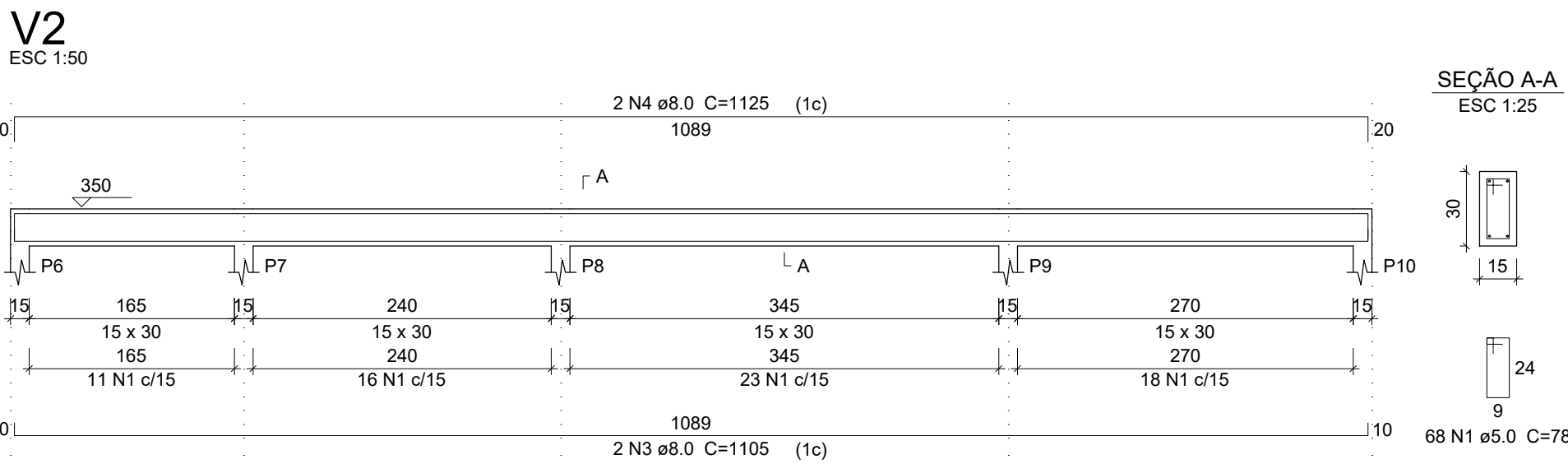
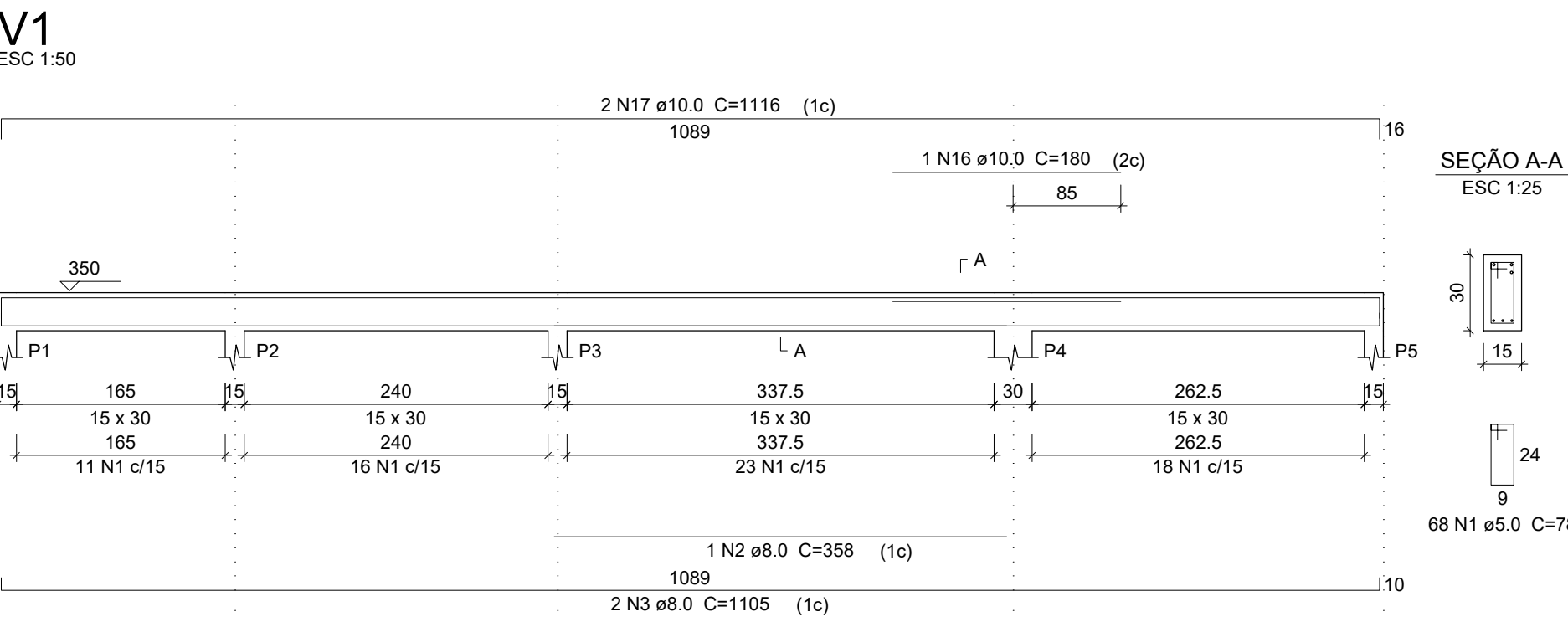
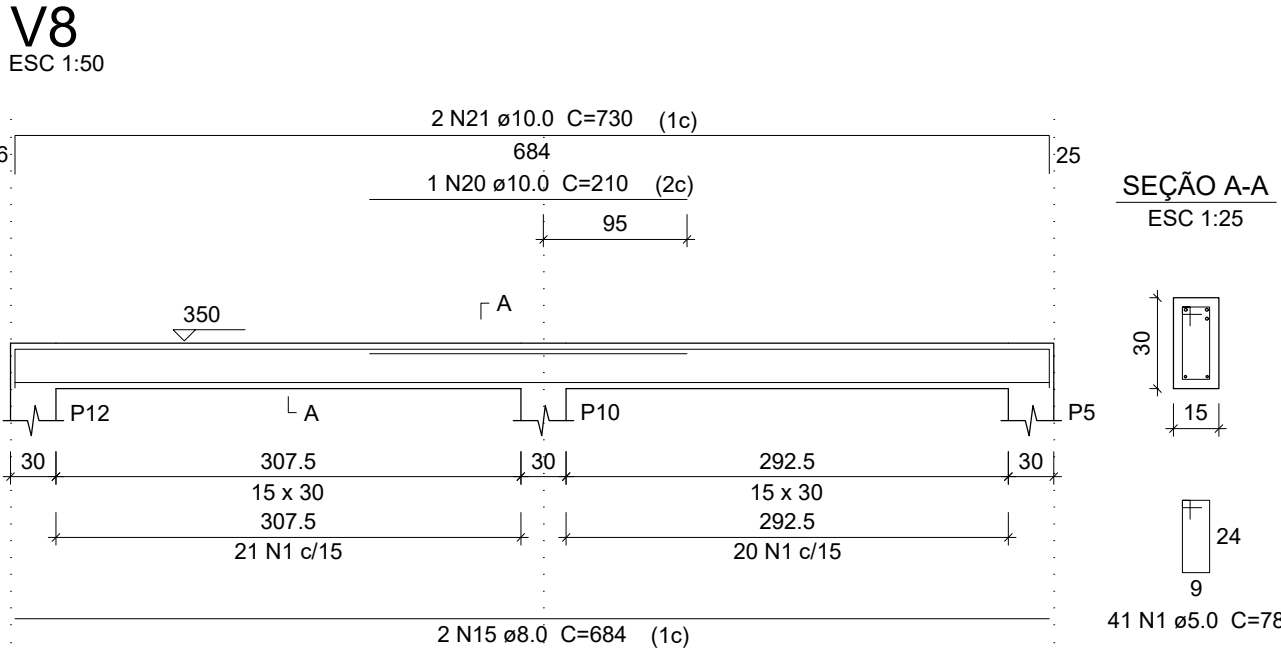
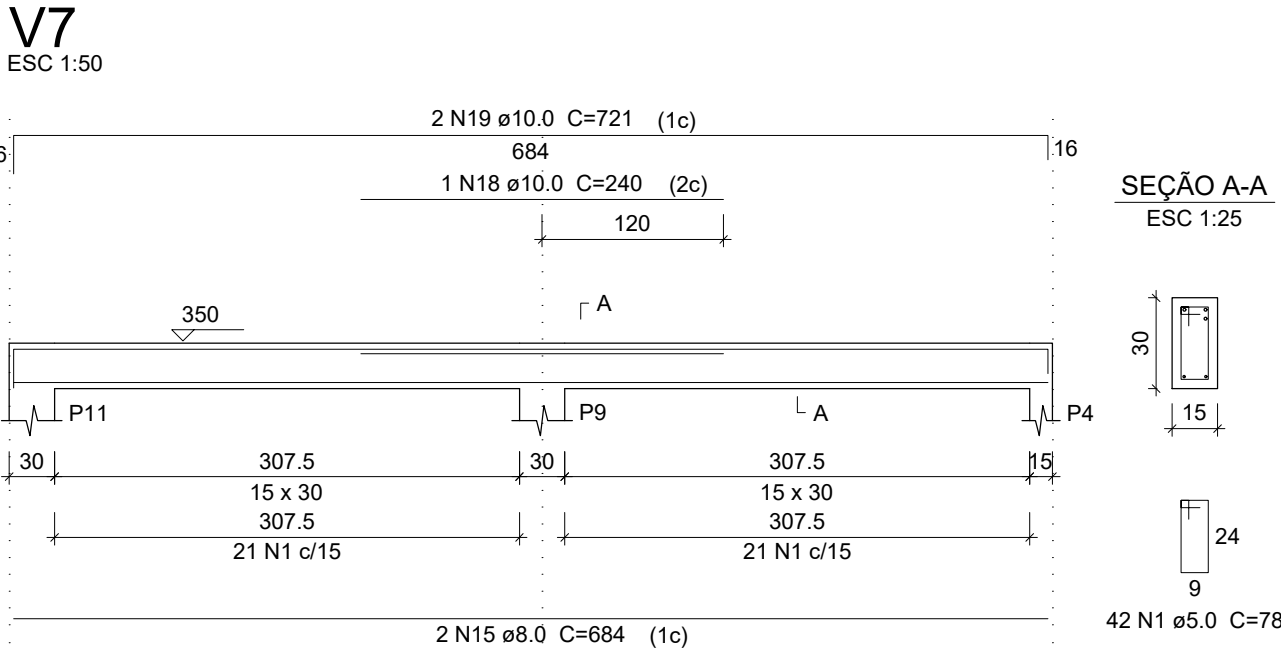
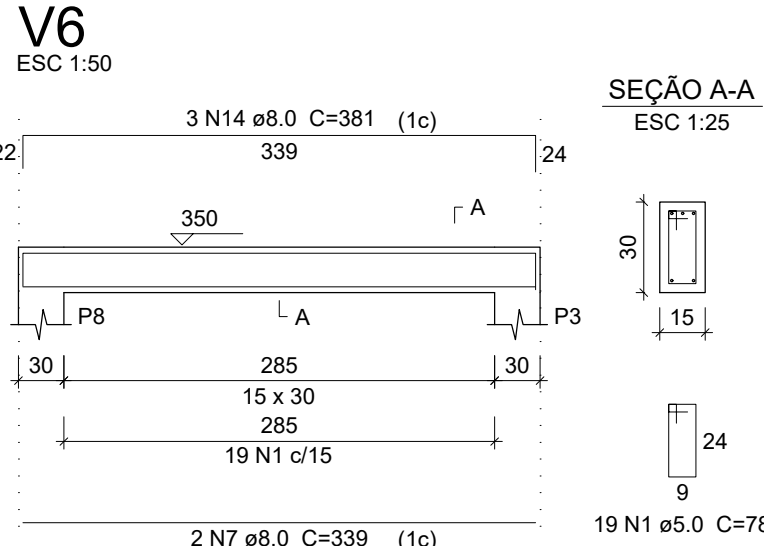
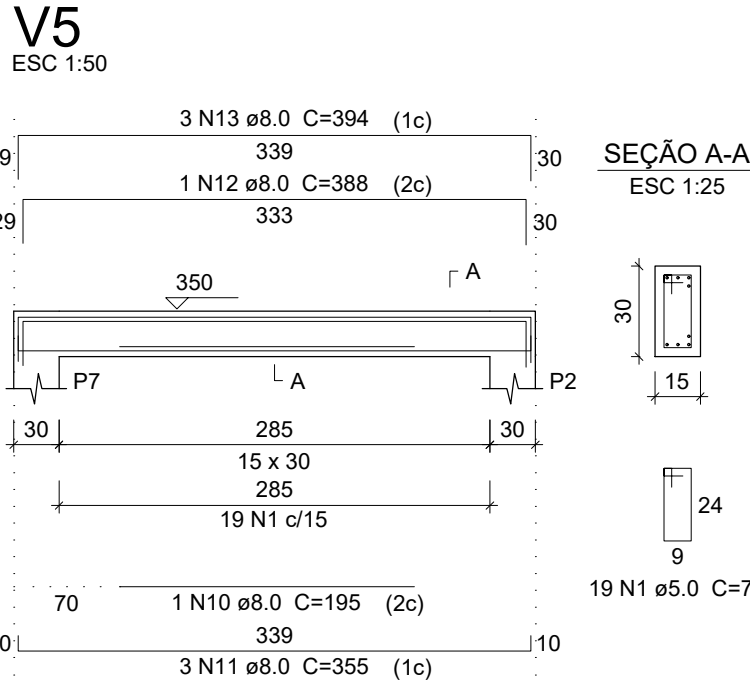
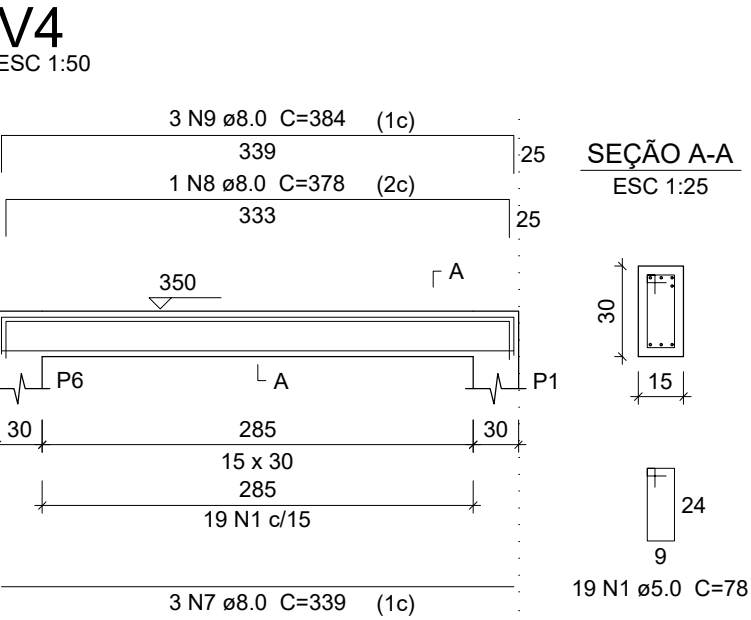


TÉRREO — VIGAS  
ESC.: 1/50



Relação do aço - Vigas Térro

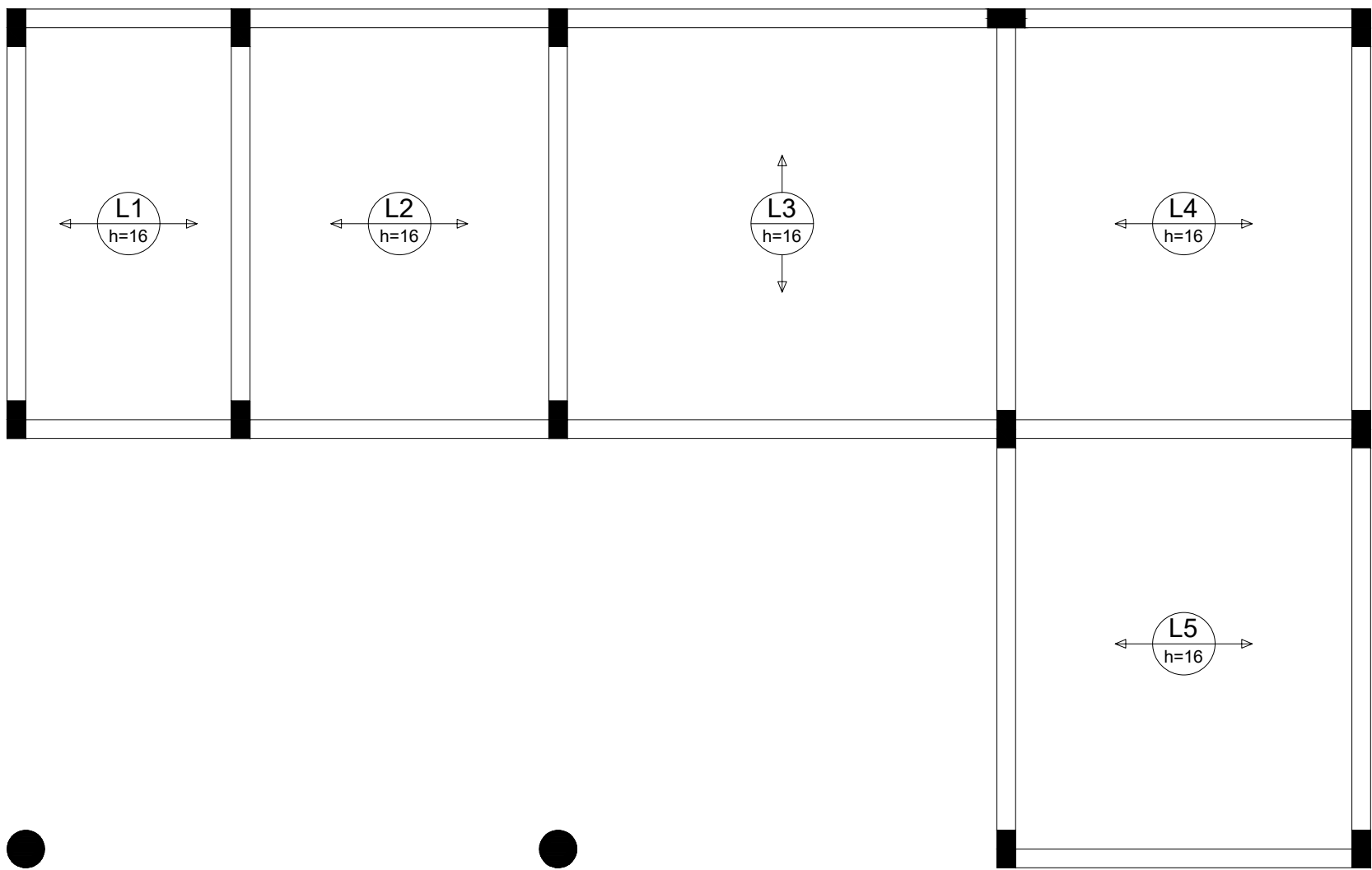
V1	V2	V3			
V4	V5	V6			
V7	V8				
ACO	N	DIAM	Q	UNIT	C. TOTAL
CA60	1	5.0	294	78	22932
CA50	2	8.0	1	358	358
	3	8.0	4	1105	4420
	4	8.0	2	1125	2250
	5	8.0	2	294	588
	6	8.0	2	330	660
	7	8.0	5	339	1695
	8	8.0	1	378	378
	9	8.0	3	384	1152
	10	8.0	1	195	195
	11	8.0	3	355	1065
	12	8.0	1	388	388
	13	8.0	3	394	1182
	14	8.0	3	381	1143
	15	8.0	4	684	2736
	16	10.0	1	180	180
	17	10.0	2	1116	2232
	18	10.0	1	240	240
	19	10.0	2	721	1442
	20	10.0	1	210	210
	21	10.0	2	730	1460



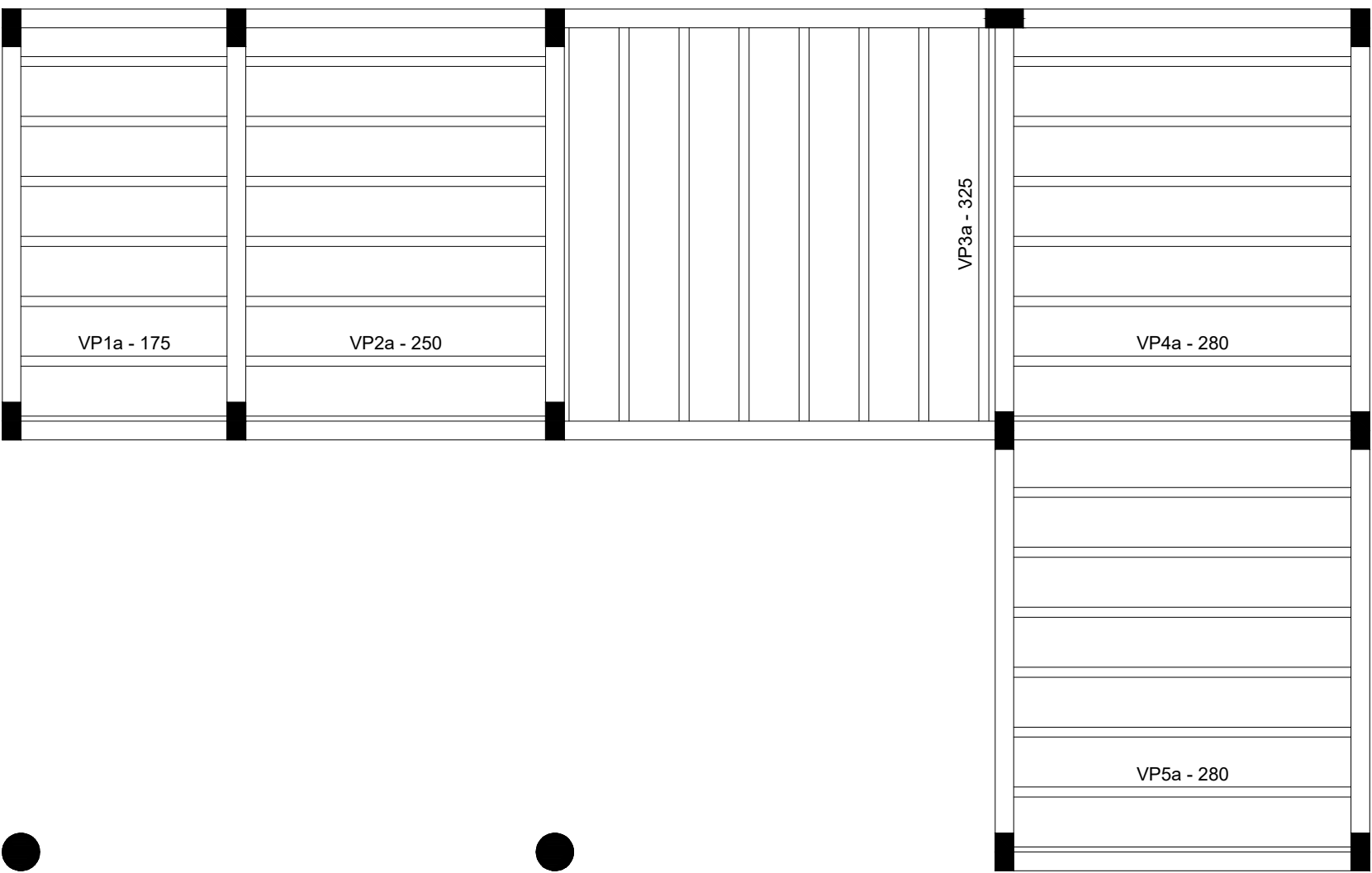
Resumo do aço

ACO	DIAM	C.TOTAL (m)	PESO + 10 % (kg)
CA50	8.0	182.1	79
CA60	10.0	57.7	39.1
CA60	5.0	229.4	38.9
PESO TOTAL			
CA50	118.1		
CA60	38.9		

Vol. de concreto total (C-25) = 2.21 m³  
Área de forma total = 36.79 m²



ARMAÇÃO POSITIVA NAS LAJES DO PAVIMENTO TÉRREO (EIXO X/Y)  
ESC.: 1/50



PLANTA DE VIGAS PRÉ-MOLDADAS  
ESC.: 1/50

FORMATO A1 - 841x584 mm



Ministério do Desenvolvimento Regional  
Companhia de Desenvolvimento dos Vales do  
São Francisco e do Parnaíba

Marcelo Andrade Moreira Pinto  
Presidente da Codevasf

Marco Antônio Graça Câmara  
Superintendente Regional

GRR  
GERÊNCIA REGIONAL DE REVITALIZAÇÃO  
DAS BACIAS HIDROGRÁFICAS

GRR/USA  
UNIDADE REGIONAL DE EMPREND. SÓCIO AMBIENTAIS

Projetado por: CREA MG 160945/D  
Engº Civil Pedro Mota Souza  
Aprovado por: CREA MG 79619/D  
R.T. Engº Civil Pedro Henrique Vila Nova Nunes

Casa de Processamento  
de Frutas  
Projeto Estrutural  
Município de Guaraciama/MG

03/03